

Meeting No. 139
Wednesday, 2 October 2019
9.00 a.m. – 10.30 a.m.

NSW Ports' Board Room, Level 3 Maritime Centre
91 Foreshore Road, Port Kembla

Minutes

Attendees	
<p>Community members Mark Peterlin Ron Hales</p> <p>Business Representatives Sara Starr – AAT Brian Kiely – Gateway Dene Ladmore – Qube Brendan Moss – Grain Corp</p> <p>Wollongong Council</p> <p>EPA</p>	<p>Port Authority of NSW Sharad Bhasin</p> <p>Other government agencies Jason Clifford – Transport for NSW</p> <p>NSW Ports representatives Trevor Brown Natalia McGregor Sarah Downey Lana Howell</p> <p>Chris Haley – Chairperson Natalia McGregor – Minute Taker</p> <p>Apologies: Lorrie Zammit Bluescope Allison Broad - UOW Andy Davis - UOW John Macpherson - Pacific National Renee Winsor – Wollongong Council Evan Wissell - AAT</p>

1. Presentation – Road and Rail Freight Initiatives for Illawarra - Jason Clifford,
Transport for NSW
See attached presentation.

2. Confirmation of Minutes of Meeting No. 137 held on Wednesday, 19 June 2019

3. Key Initiatives and Actions

TB –

- Release of the NSW Ports Sustainability Plan.
- Weed and Pest report has been postponed to early 2020.
- The UOW Anchoring project has been unsuccessful with further university funding but NSW Ports will provide them with details from shipping agents to facilitate them investigating the alternative option of working directly with visiting ships.
- Sustainable Development Code is underway.

4. Climate Change

CH – The IPCC just recently released a report on oceans and the cryosphere (polar areas) which is available on the web. It is full of doom and gloom and if we don't curtail emissions soon, we will all be swimming in the future.

Action – Trevor to print the summary of this report

MP – Sea level monitoring was installed possibly 50 years ago at Port Kembla and it would be interesting to see what the results show locally. Flinders University might be able to provide us with details

Action – Trevor to source the data on the sea level monitoring

DL – in September in 1970 it was much cooler than September is now

RH – The lecture at the Allen Sefton memorial focused on species migration south in the Southern Hemisphere and north in the Northern Hemisphere because of rising sea temperatures. It's obvious that there are patterns which can be observed. I was also shocked to learn about the role the ocean plays in absorbing CO₂ in the atmosphere, it absorbs more than trees do.

5. Road and Rail Infrastructure

N/A

6. PKHEG Website

TB – has been challenged by Wix.

CH – Can Natalia can assist with this?

Action – Natalia to support Trevor and see if we can get the website developed.

7. Legislation and Policy

TB – NSW Ports has received a compliance certificate as First Point of Entry (FPOE) operator under the *Biosecurity Standards*, by the Department of Agriculture. This is because we have met with all requirements for our common user berths, by setting up Biosecurity Response Kits and developing a Biosecurity Incident Response Procedure. Next NSW Ports will roll out a Biosecurity Induction to all relevant stakeholders.

CH – is the Brown Marmorated Stink Bug (BMSB) still a concern?

TB – the BMSB season is about to start and so monitoring and surveillance across the port will be increased. This is most relevant to car carriers and the container trade in Port Botany.

8. Round Table Reports (update on Harbour related information)

Graincorp

BM – We received a fine at the Land and Environment Court yesterday on fumigation. The press release is likely due out in the next couple of days. There was no harm to human health or the environment. As part of our export requirements, we have to fumigate outgoing grain with Methyl Bromide. We treat the grain and then vent the gas through a stack. Prior to venting calculations are done on the flow rates, velocity etc. Between Feb 16 and Jan 18 there was a calculation error built into our formula and as a result we were in breach of our licence and self-reported. We've had independent assessments done which concluded NIL impact but we have still received a fine.

Action – Brendan to send Natalia the press release to include with distribution of the minutes

BM – we have a new project with Falcon on cement due to start at the end of the month. Cement powder as finished product (not a batching plant) will be arriving in bulk. We have modified 4 silos to store the cement powder. This is a credit to GrainCorp on diversification and a positive partnership arrangement. The DA went through as a complying development because it involved repurposing existing infrastructure.

MP – why is this not communicated with the community, just because it is a complying development? It is worrying to the community and it bothers me.

CH – fair point Mark, obviously there has been pre-planning. Perhaps this group should be informed early on.

TB – we encourage proponents to consult prior to obtaining approvals, but some projects due to commercial reasons must remain confidential. The bigger picture here is that we have made good progress for cement on rail here and that was a voluntary initiative by Cement Australia.

NSW Ports

TB- A qualitative risk assessment (RA) has been completed at PK for incidents. This was completed through a workshop with tenants and shared with local regulators. In preparing the RA we considered scenarios where a cruise ship was present.

CH – what were the main risks identified?

TB – New industry at the Port, fugitive dust. We looked at risks to people shore-side as the maritime side is managed by the Port Authority of NSW. It was a good exercise to share knowledge and one of the key outcomes is to update our emergency plan.

On the LNG project, modifications to scope are being undertaken for a higher throughput because of significant industry interest. Currently the design work is progressing and the pipeline will go internally through the Port and Tom Thumb Rd.

NM – update on the Heritage museum. The new volunteer group that has taken over is called Wollongong Heritage Collections Inc (WGC) and they have gained their incorporation. They are now working through the legalities of taking over the gun license at the museum as the collection currently houses over 50 heritage guns, which is a significant collection. Reminder to the PKHEG members, that if anyone is interesting in being involved with the heritage group, or knows of any interested parties, please let me know.

Port Authority

SB – the Port Authority is moving to a new system called “vessel traffic services”. This will improve safety for the entire port and is required by the IMO. The current vessel management system is controlled locally but AMSA is now required to oversee vessel traffic services at the national level.

We have had a change in structure as well, Peter Anst is our new General Manager and our long standing employee Roger Kirk finished up last week. Currently due to a number of

management structure changes in Sydney, we are holding off on recruiting someone to replace Roger but there will be a requirement to have someone in that role eventually.

NSW Ports Sustainability Plan

SD – The 2019 NSW Ports Sustainability Plan was launched last month as everyone is aware. We are tracking responses to the email that was sent out and visitation to our NSW Ports online Sustainability Portal. We had 50% of all people that received the email go directly to our site to have a look which is a positive response. We now also regularly share good news stories and a link to our sustainability hub on Linked In.

Action – Sarah to share a link to the Sustainability Portal and our NSW Ports LinkedIn profile, to all PKHEG Members

Port Kembla Gateway

BK – we have a new customer Herron Resources which is delivering zinc (and eventually copper) to our site. We have received 3 trains and our sheds are now complete to minimise the dust and increase storage for exporting of mining product. The product is processed at the Herron Resources site and we receive it processed and in containers on a train, so it is a clean operation. We will then lift the containers into our shed using the automatic system.

AAT

No Update

Community

RH – The recent accident at Mt Keira road caused major traffic delays. I'm wondering whether there are any alternative routes?

JC – Mt Ousley Road, south bound is Figtree. For heavy vehicles there are no alternatives at this stage.

RH – NSW Ports should be blowing its trumpet a bit more about all the good things that they are doing and not just online. We could use other forms of media to promote good news stories.

RH – what is going on at the Bridge St construction – what's going on?

TB – lights are going in at Keira St, I am unsure what is going on there.

Action – Jason to provide an RMS contact for the group to reach out to

Chair

9. New Business

Proposed Bitumen Plant

MP - Is there any update on the bitumen plant?

TB – we have been working on the pipeline route. It's an important facility so they will be using Berth 206. The proponent will be aware of long term intention for the Outer Harbour future development, but currently the proposed container park is 20 years away.

Stormwater Runoff

Image shows stormwater outlets (doesn't include freehold Bluescope land)

RH – Is there monitoring of water quality?

TB – the Coal Terminal does their own as a licensed facility. Bluescope monitors their own.

CH – Will there be any study on monitoring?

TB – NSW Ports is not proposing a monitoring study but our Sustainable Development Code will include expectations for stormwater management for whole of Port. What we are more

interested in, is ensuring each tenancy manages its own stormwater appropriately even if they are unlicensed.

Action – Ask Laurie to present at the next meeting regarding the stormwater management at Bluescope

MP – the real issues come from Allens Creek fish kills that originated from Bluescope. They self-report but are under the EPA. Wasn't there meant to be a gross pollutant trap installed by council and Bluescope?

Action – Ask council to update the PKHEG for the next meeting on the GPT install

10. Next Meeting:

DATE: Wednesday, 4 December 2019

VENUE: NSW Ports Board Room
Level 3, Maritime Centre
91 Foreshore Road
PORT KEMBLA

TIME: 9.00 a.m. to 10.30 a.m.

RSVP: Trevor Brown on Telephone: 4275 0714
or E-mail trevor.brown@nswports.com.au



Transport
for NSW

Port Kembla Harbour Environment Group

2nd October



Improving transport is a priority



Freights importance to the NSW Economy



Freight activities contribute **\$66 billion** to the NSW economy



>500,000 people are employed in broader logistics industry



Sydney CBD and its **630,000** workers are supplied by **35,000** commercial vehicle trips every week day



Freight task across the state is expected to **grow 28%** to 618 million tonne in 2036.

Freight Challenges



Freight can create **negative impacts** such as traffic, air, light and noise pollution or effects of vibration



Important to plan appropriately to **accommodate** freight while **protecting** the health, safety and quality of life of residents

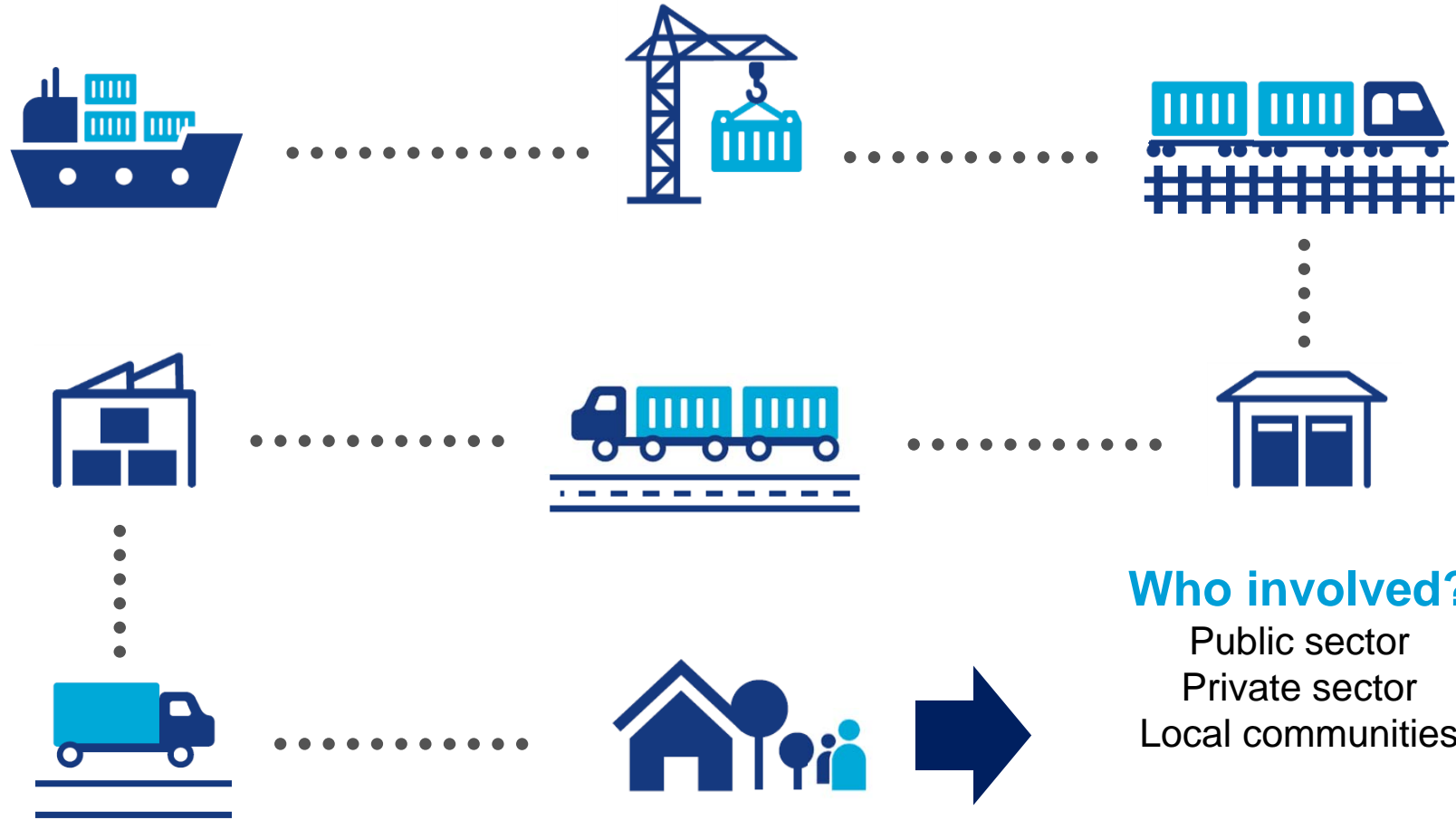


Land use planning decisions have a critical impact on freight
Any inefficiencies are passed on through supply chain



Freight transport is **Commercial** and **service orientated**. From arriving at the port to delivering to the end customer

Complexity, Connectivity and Customer Service



A clear plan provides investment certainty and hence freight **efficiency**

Growth of Demand for Freight Activity in Sydney

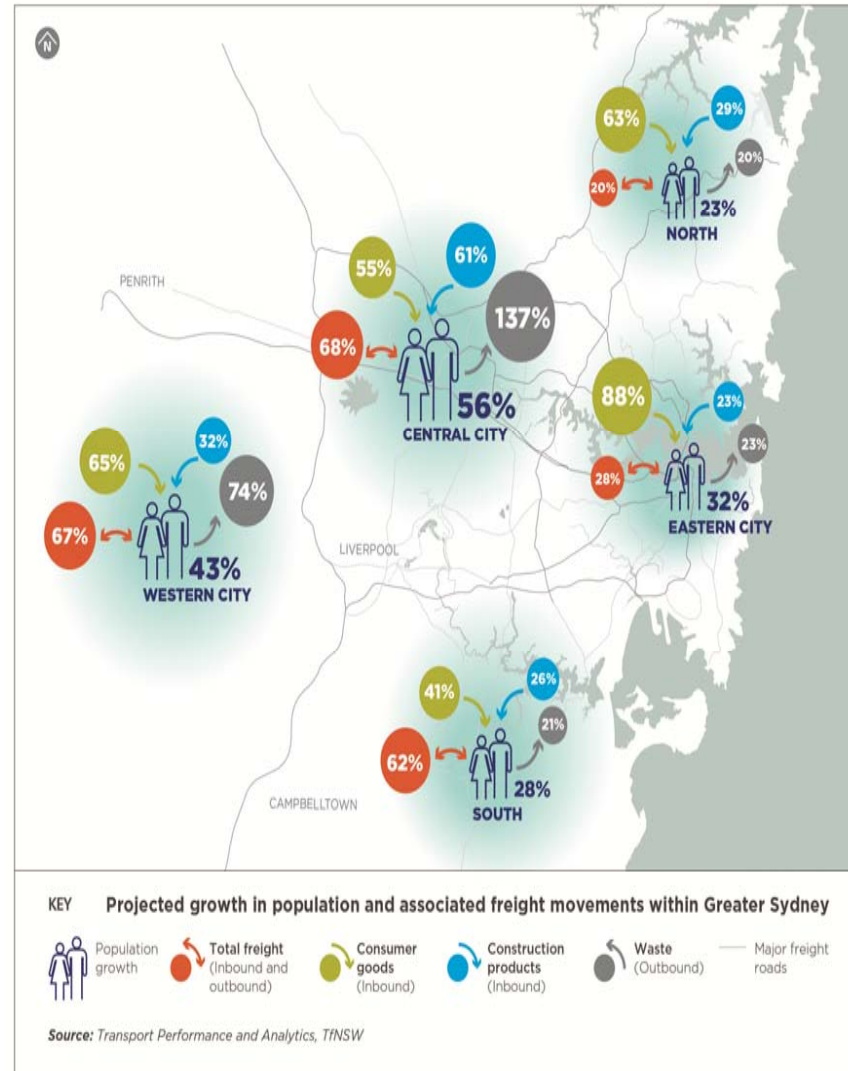
Across **Sydney** it is expected to **grow by about 50%.**

This will be caused by:

- Population growth
- Changing household consumption trends

It means more demand for transport services in:

- Construction materials
- Management of waste



Growth of Demand for Freight Activity in NSW

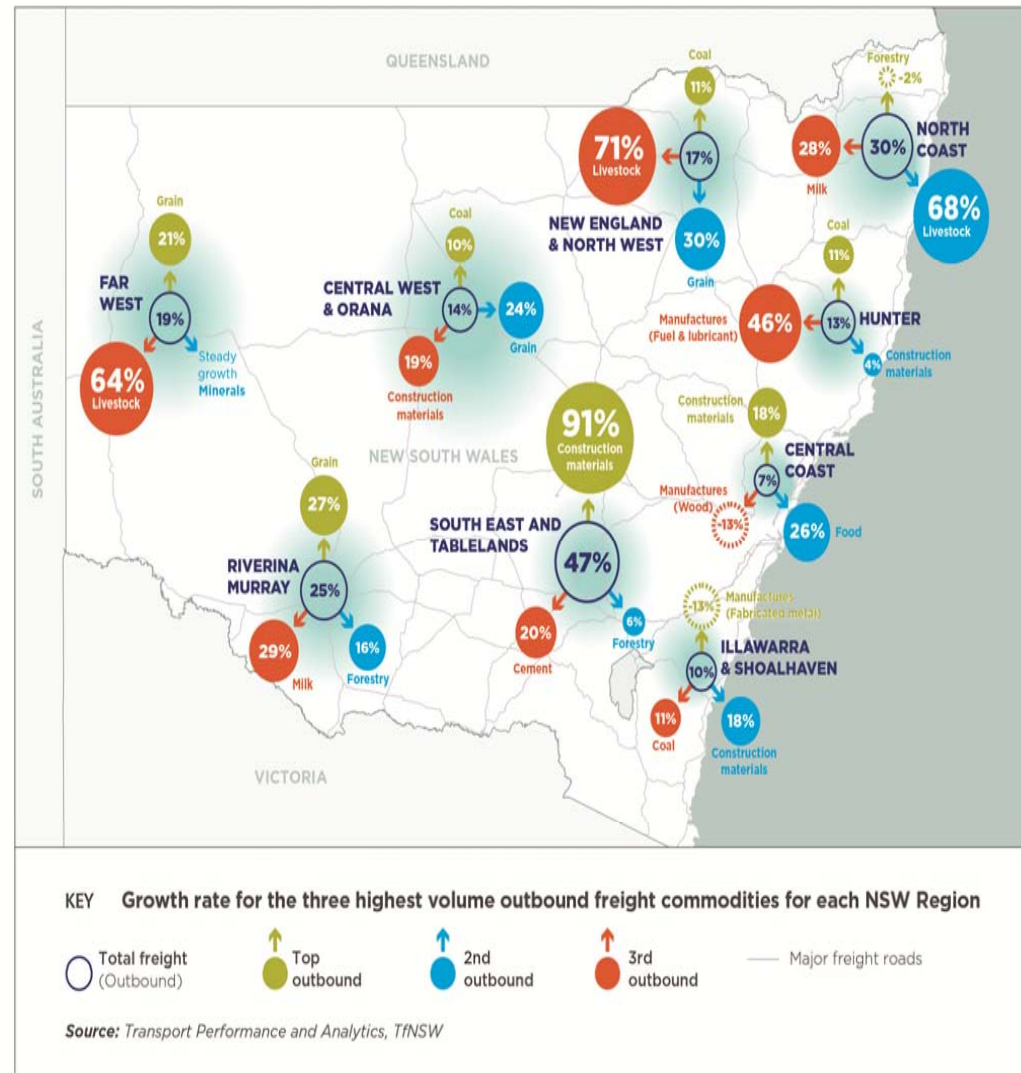
Across **NSW** it is expected to **grow by about 28%.**

This will be caused by:

- Changing household consumption trends
- Key commodities

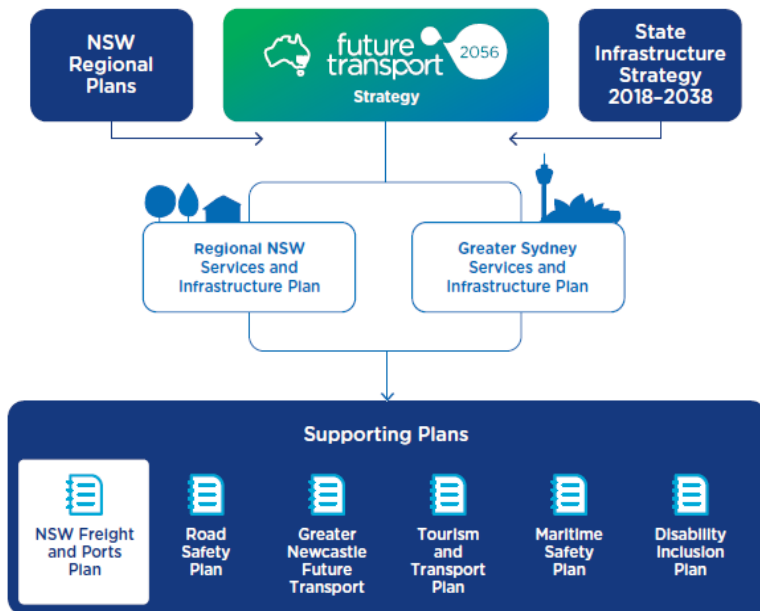
It means more demand for transport services in:

- Construction materials
- Livestock, Red Meat, Grain



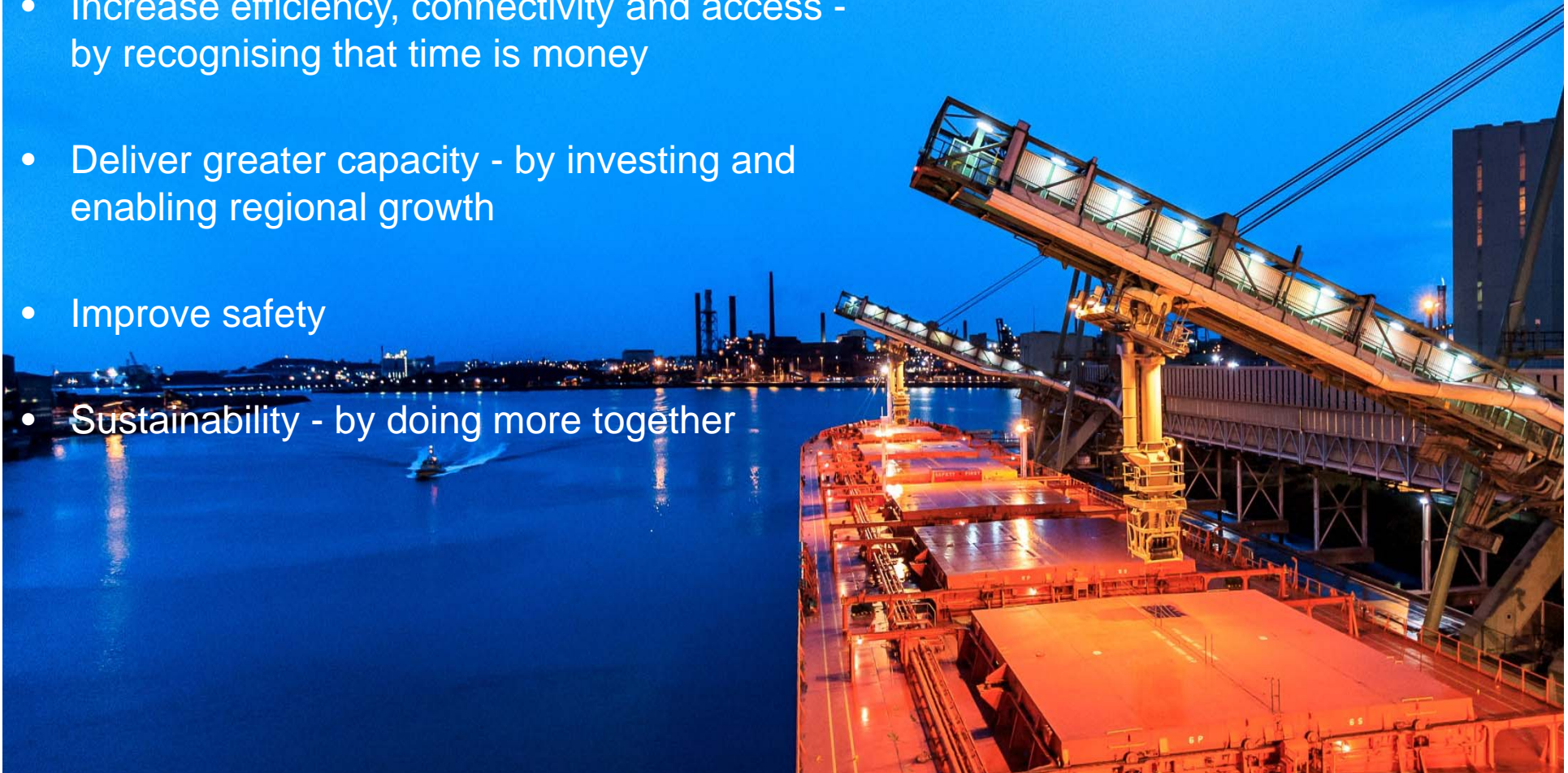
A plan for action

The NSW Freight and Ports Plan 2018-2023 is a call to action for government and industry to collaborate on clear initiatives and targets to make the NSW freight task more efficient and safe so NSW can continue to move and grow



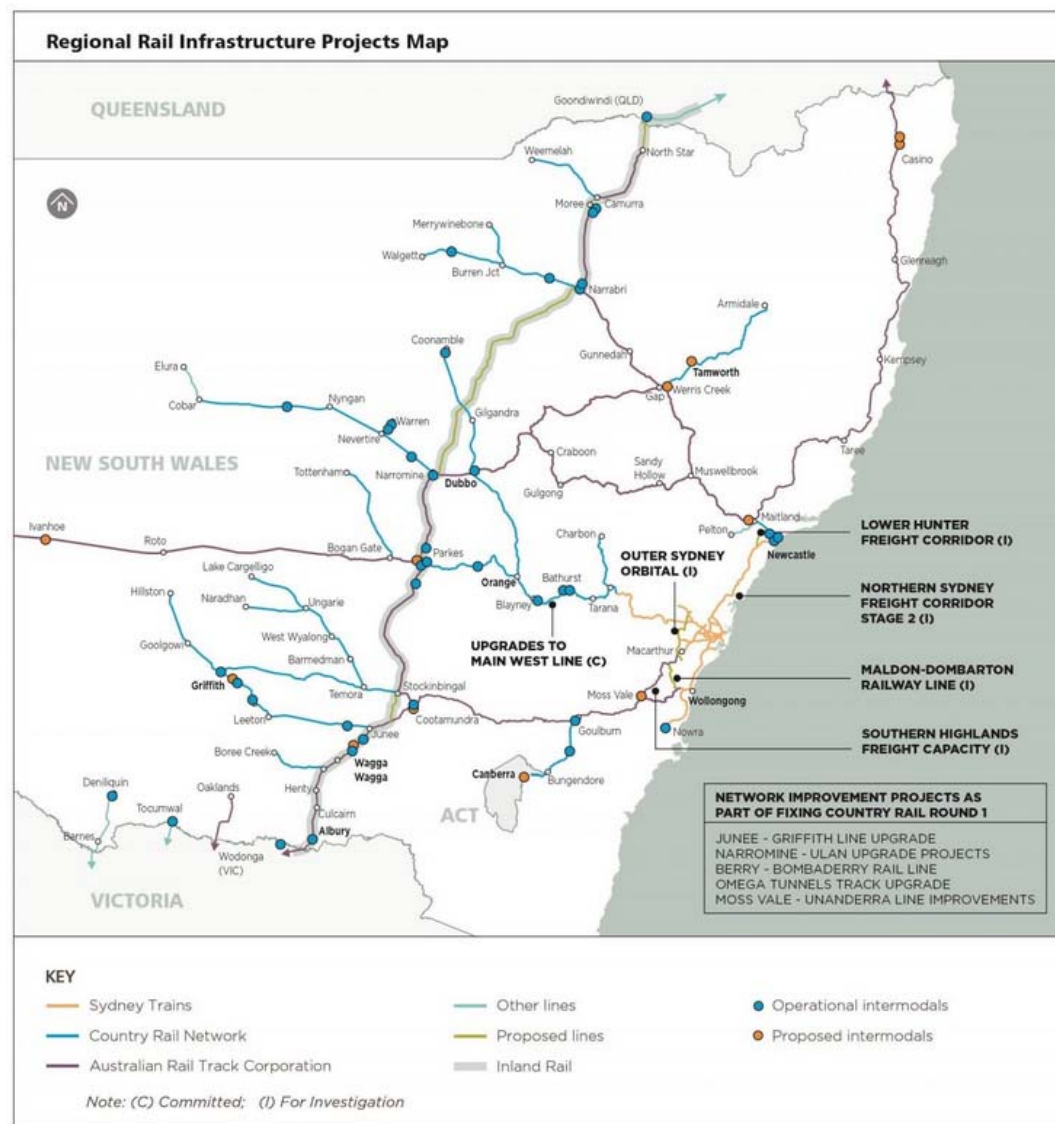
Our objectives

- Drive economic growth - by delivering more than \$5 billion worth of infrastructure
- Increase efficiency, connectivity and access - by recognising that time is money
- Deliver greater capacity - by investing and enabling regional growth
- Improve safety
- Sustainability - by doing more together



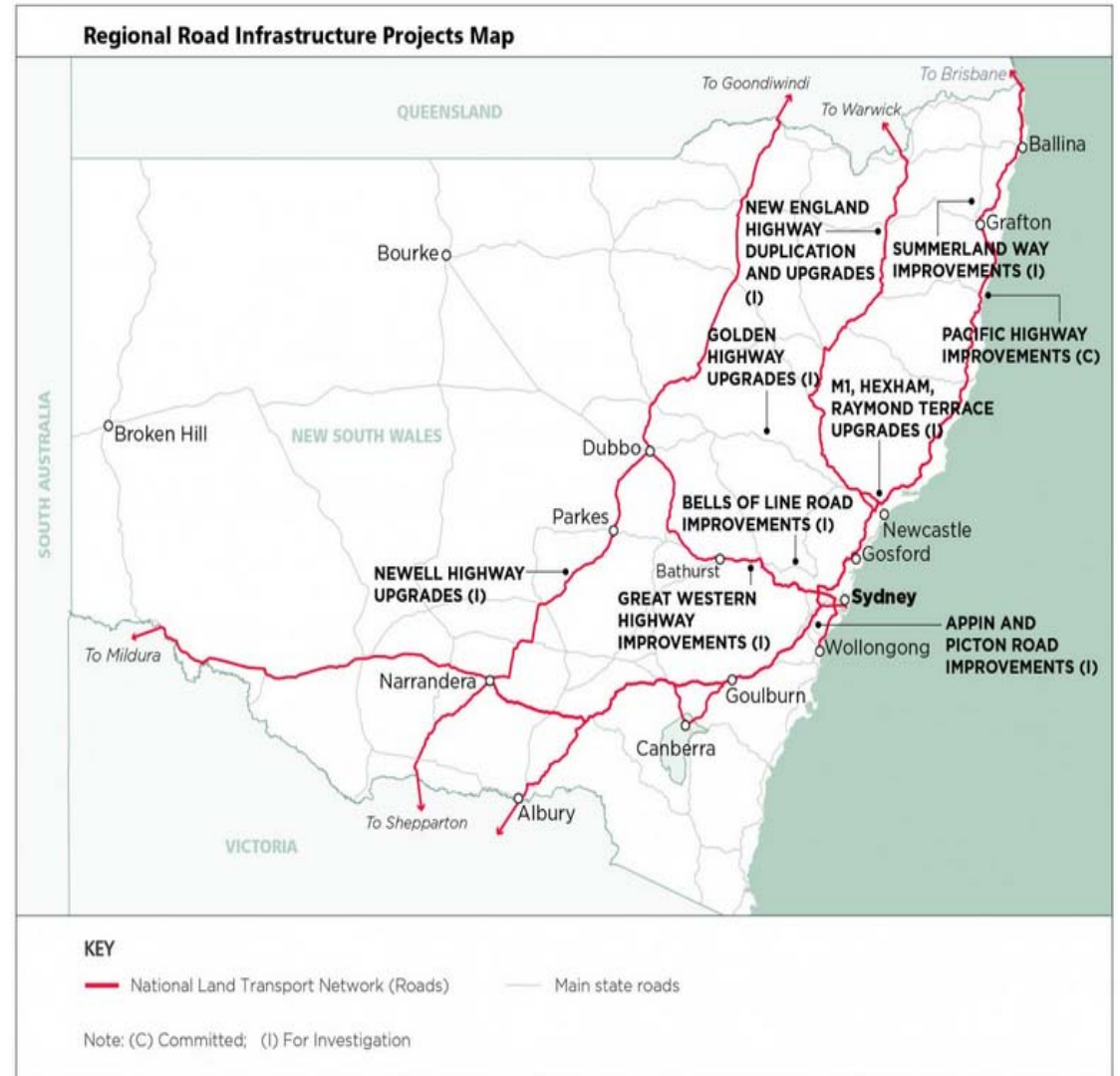
Illawarra Shoalhaven Initiatives – Rail

- Maldon – Dombarton
- Berry – Bombaderry
- Moss Vale – Unanderra
- Southern Highlands
- Outer Sydney Orbital
- Fixing Country Rail



Illawarra Shoalhaven Initiatives – Road

- Appin and Picton Road
- M1 Princes Motorway Improvements
- Mount Ousley Interchange
- Albion Park By-pass
- Fixing Country Roads



Sustainability and Environmental Initiatives

The transport sector in Australia accounts for around 17 per cent of total greenhouse gas emissions.

- **Support initiatives to reduce freight emissions**
 - **Develop electric vehicle strategy**
 - **Advocate for stronger national vehicle standards**
 - **Investigate emissions controls for diesel locomotives**
- **Manage the noise impacts of freight**
 - **Work with industry to reduce noise impacts of rail freight**
 - **Investigate environmental performance accountability improvements**
 - **Support electric vehicles in high density areas**
 - **Further research into noise impacts**



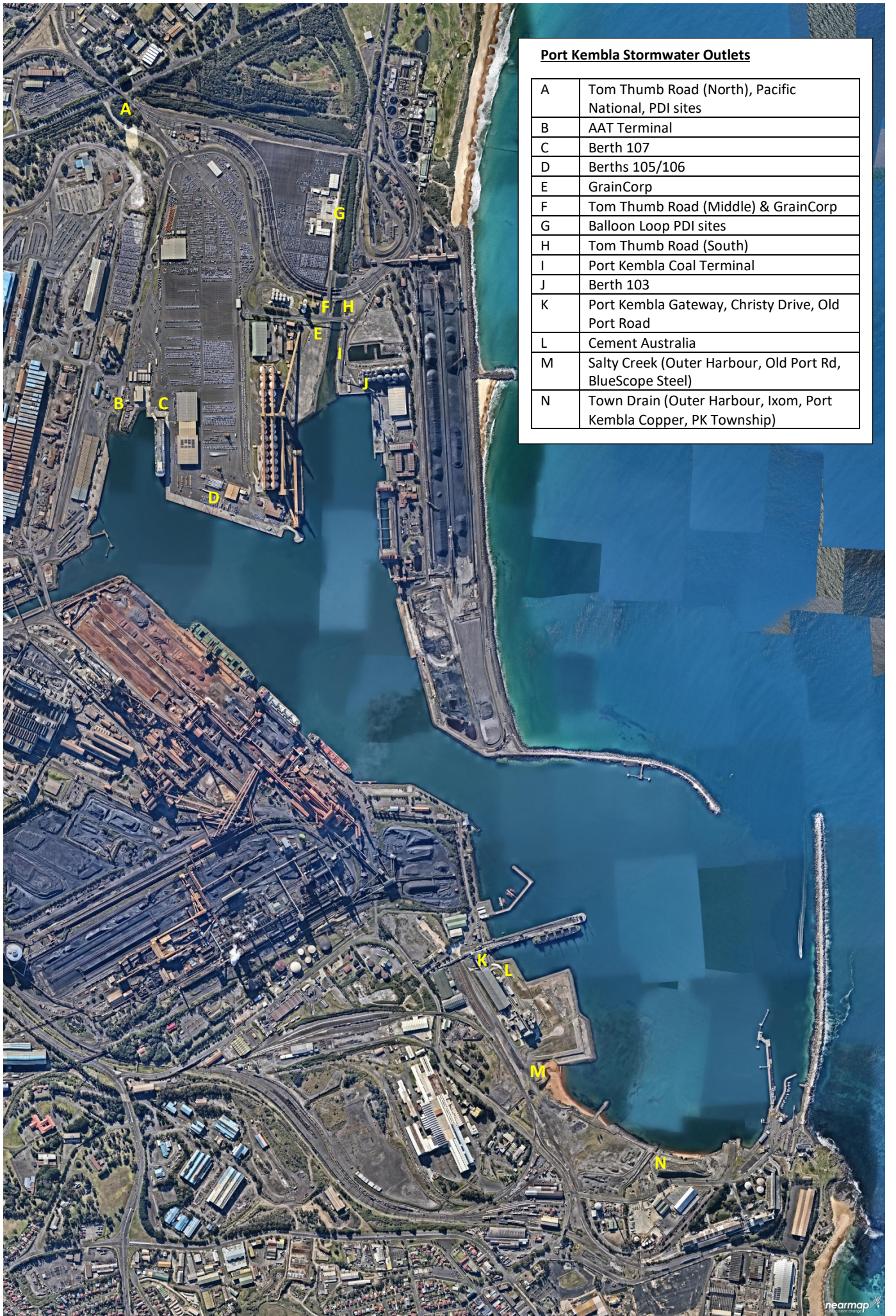
Review of the Marine Pollution Act 2012

- **TfNSW is reviewing the Marine Pollution Act 2012 (the Act)**
 - a discussion paper can be accessed on our website
- **The Act regulates marine pollution from vessels in NSW waters**
- **It implements the international MARPOL Convention in NSW and covers five key marine pollutants - oil, noxious liquids, packaged harmful substances, sewage and garbage**
- **The Act also includes important State-based measures for implementing pollution prevention requirements**
- **Submissions for the review are due by Wednesday 16 October 2019.**



A blurred photograph of a highway at sunset. The sky is filled with vibrant orange and red clouds. A large white box with rounded corners is centered in the image, containing the word "Questions" in a bold, dark blue font. The background shows a road with a car in the distance and a blurred structure in the foreground.

Questions



Port Kembla Stormwater Outlets

A	Tom Thumb Road (North), Pacific National, PDI sites
B	AAT Terminal
C	Berth 107
D	Berths 105/106
E	GrainCorp
F	Tom Thumb Road (Middle) & GrainCorp
G	Balloon Loop PDI sites
H	Tom Thumb Road (South)
I	Port Kembla Coal Terminal
J	Berth 103
K	Port Kembla Gateway, Christy Drive, Old Port Road
L	Cement Australia
M	Salty Creek (Outer Harbour, Old Port Rd, BlueScope Steel)
N	Town Drain (Outer Harbour, Ixom, Port Kembla Copper, PK Township)